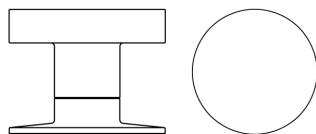




Nº 1903

The Bauhaus-inspired No 1903 knob follows the School's disciplined use of geometrical forms, while producing a beautifully proportioned, elegant design. The rose, with slightly pitched face and three exposed screws, rises to meet the cylindrical shank and minimalist knob. Full mortise entry locks, privacy locks, passage latches, as well as tubular latches can be provided for use with this knob. Finishes available include satin nickel, polished brass, matte antique brass, polished chrome and dark oxidized bronze, as well as the myriad of other Nanz [finishes](#). It measures 2-1/4" in diameter with a projection of 1-7/8" and is available in 3/4", 1", 1-1/4", and 1-1/2" diameters suitable for cabinetry.



Diameter: 2-1/4"

Projection: 1-7/8"

NEW YORK BOSTON CHICAGO MIAMI LOS ANGELES SAN FRANCISCO LONDON

THE NANZ COMPANY 121 VARICK STREET NEW YORK NY 10013 212 367 7000 [NANZ.COM](#)