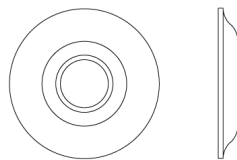




N° 5007

The N° 5007 rose is formed by a simple, elegant ogee that rises in a curve from the circumference to the shank of the handle. This rose, as designed, can accompany a vast selection of knobs and some levers, but can be manufactured for use with any handle if required. All Nanz plated and patinated finishes are available.

81703



Diameter: 2" 2-1/2"