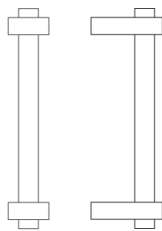




Nº 8810A

The No 8810A handle can be mounted horizontally as a drawer pull or vertically as a cabinet pull. A simple acrylic bar between two slightly flaring posts forms the handle. The No 8810A is available in two sizes. All Nanz plated and patinated [finishes](#) are available.



Center-to-Center: 4-3/4" 6"

Projection: 1-3/8" 1-3/8"